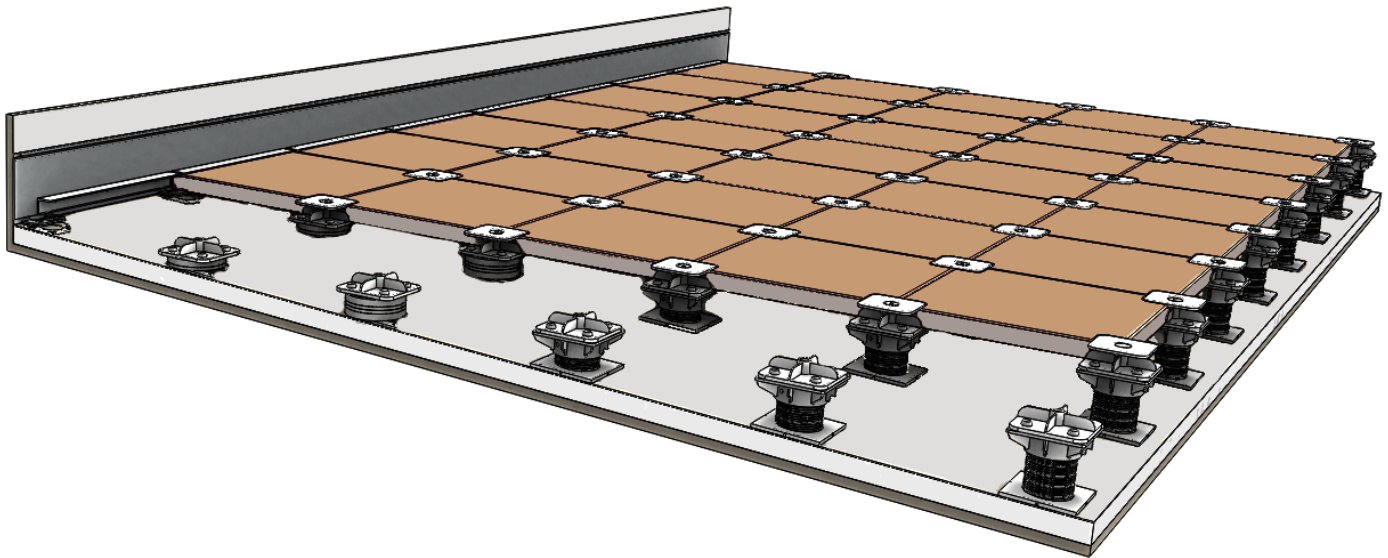
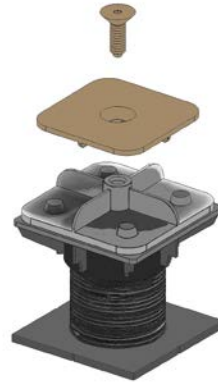
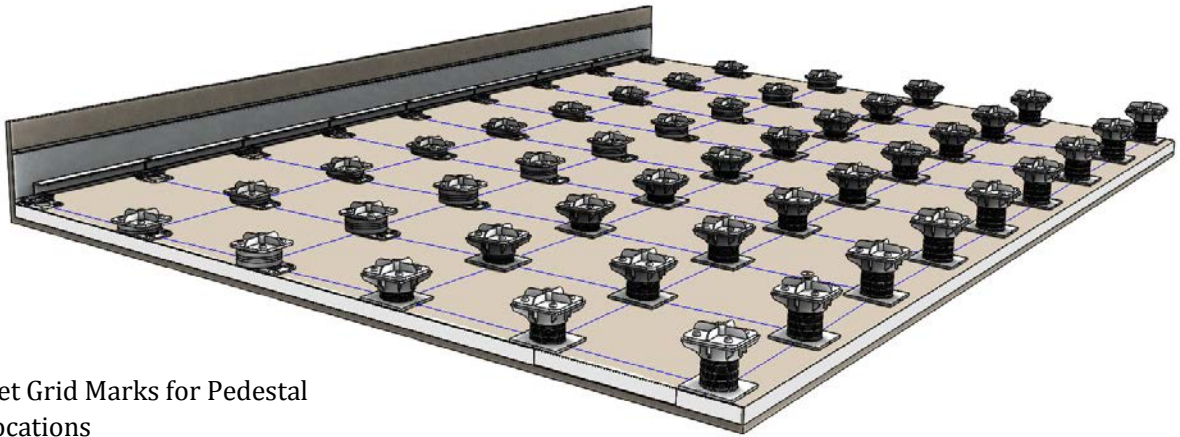


LOK-DOWN INSTRUCTIONS

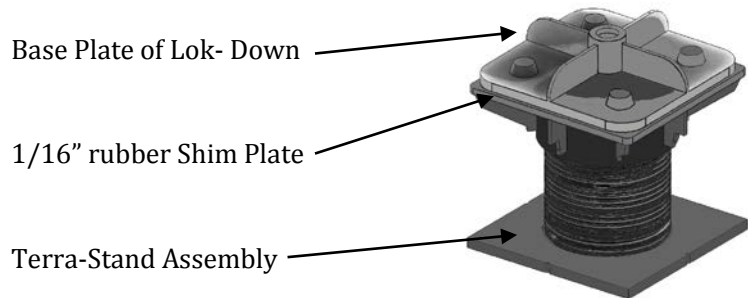




Set Grid Marks for Pedestal locations

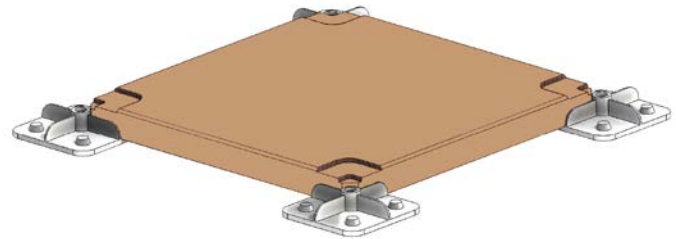
Lok-Down units must be installed on a level pedestal system

Lok-Down base units can be installed on Shims, Waffle Reducers, or Terra-Stand Pedestals



Install Lok-Down Pavers on base plates

Maintain proper alignment between the base plate, and the underside of the paver

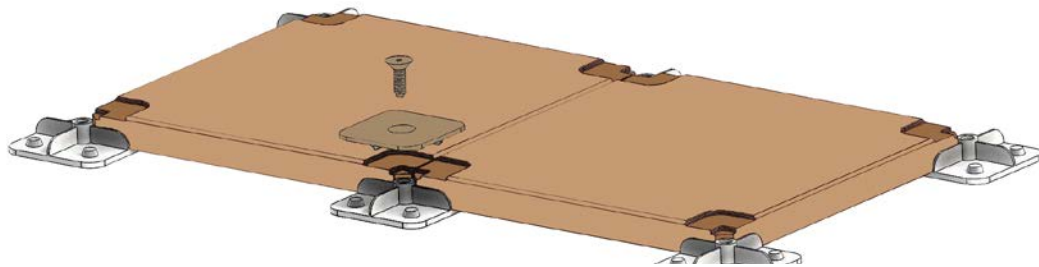


A WAUSAU TILE INC. BRAND

Install Screw into Lok-Down with a hex bit

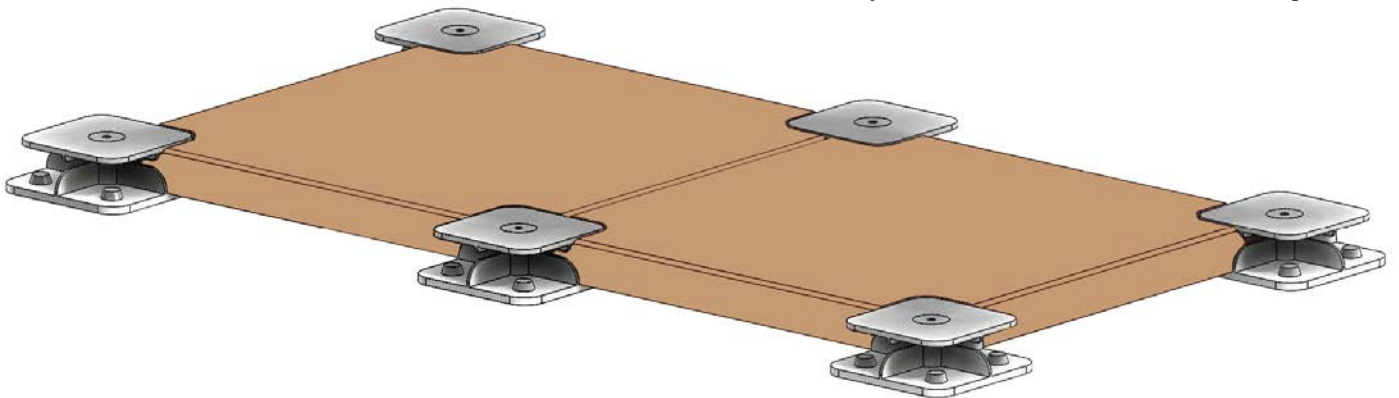
Tighten to 70 ft. - pounds maximum

Do not overtighten



Lok-Down Top Plate must be flush with paver surface

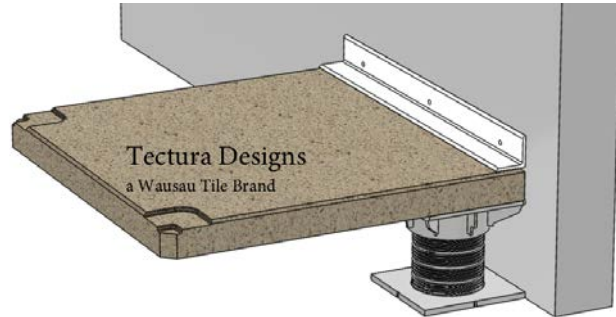
Verify screw does not exceed 70 ft. - torque



A WAUSAU TILE INC. BRAND

Wall Termination Methods

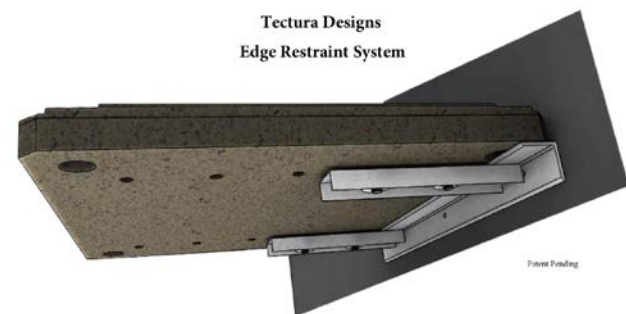
Termination Bar installed above the paver



Termination Bar installed flush with paver



Concealed Terra Paving under edge restraint



916JC

A WAUSAU TILE INC. BRAND