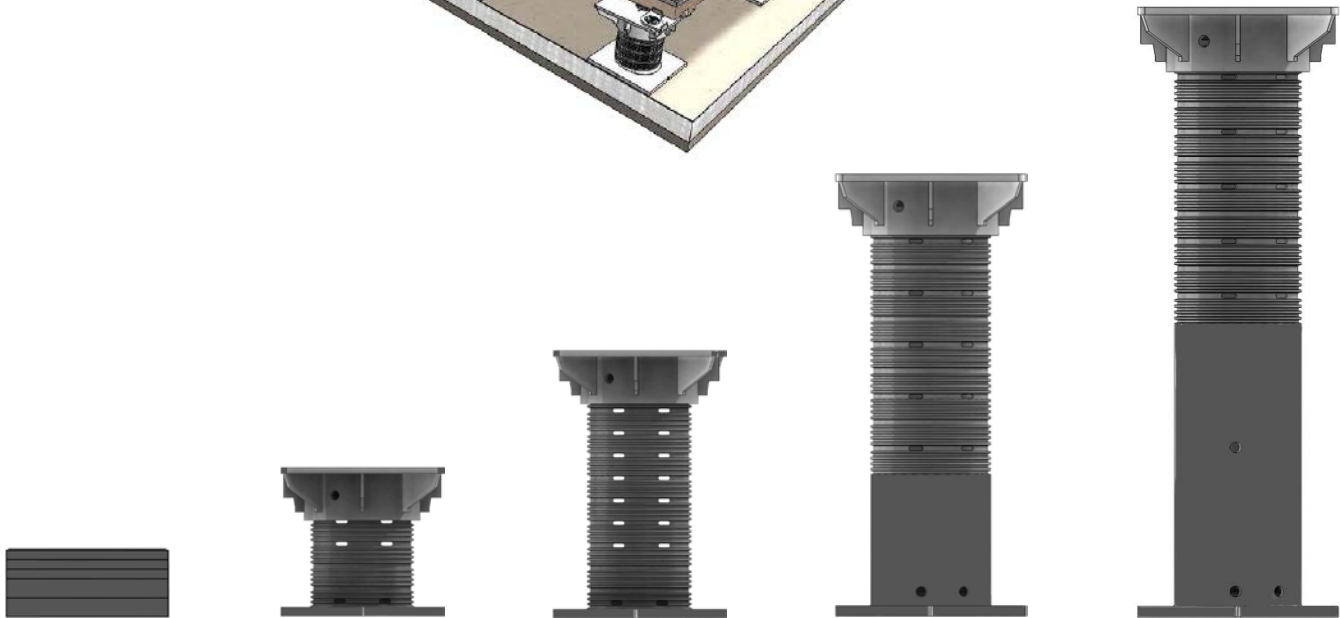
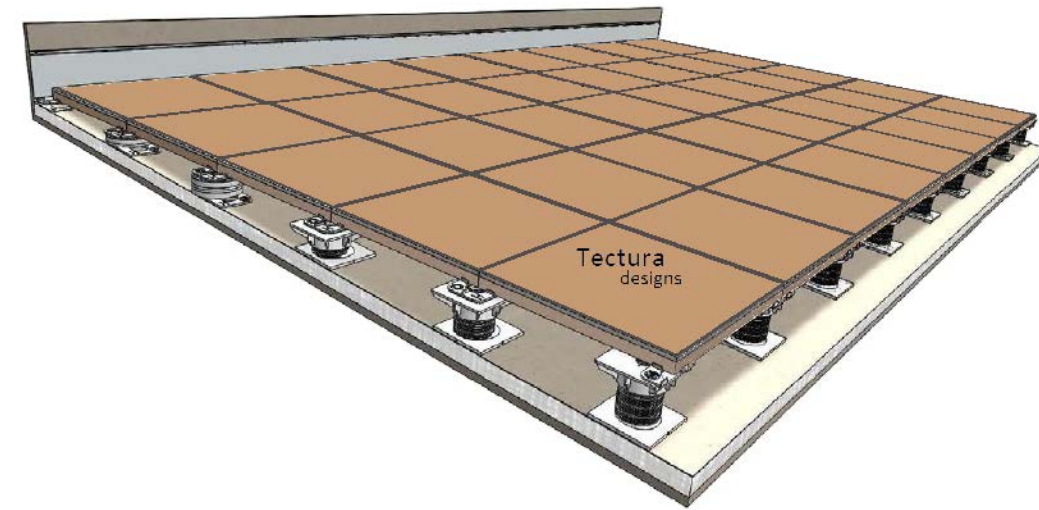


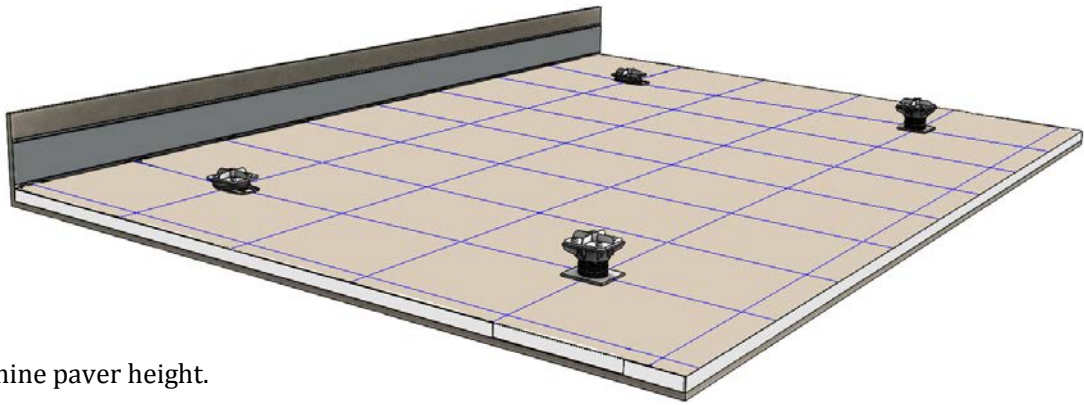


TERRA-STAND PEDESTAL SYSTEM INSTALLATION INSTRUCTIONS



A WAUSAU TILE INC. BRAND





Determine paver height.

Establish paver grid lines. Grid can be centered in the area, or aligned with a wall.

Set quadrant pedestals at required height.

Use a transit, or laser level to determine pedestals height.

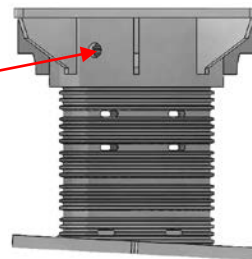
Pedestal cores are cut to length, discarding open end piece.

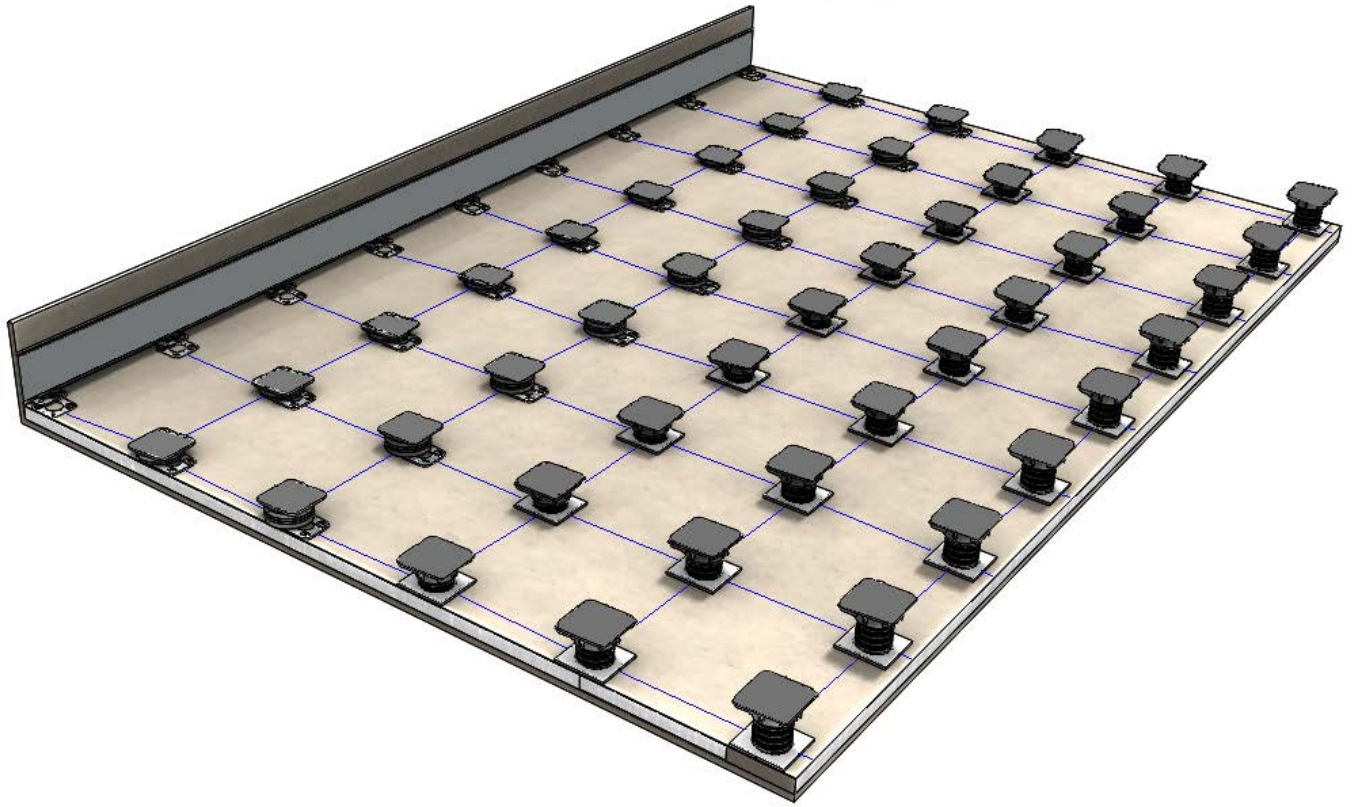


With base flat on sloped roof, level pedestal top, and tighten base nut.

Pedestal core must be visible through side inspection hole.

Make final height adjustments by rotating top of pedestal.

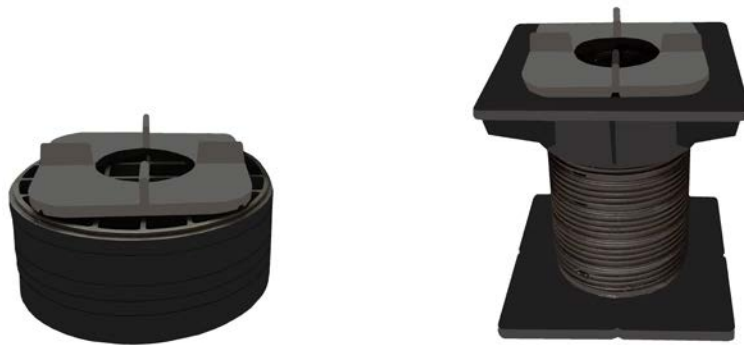




Position Waffles, and Terra Stands at the grid intersection lines.

Verify height at each location.

Terra Tabs provide spacing between pavers. They are placed on top of the Waffle Reducers, and Terra Stand Pedestals.



A WAUSAU TILE INC. BRAND

Install pavers on top of pedestals.

Installation can start at the center of pedestal grid, and work toward the edges. Edge pavers will need to be cut to fit.

Or

Installation can start at a wall with full size pavers. As grid is filled, edge pavers will need to be cut.



916JC

A WAUSAU TILE INC. BRAND